

BALDOR • RELIANCE

Customer information packet

LPL75

.75HP, 3600RPM, 1PH, 60HZ, 3524C, DENTAL LATH

Specifications

Frequency	60.00 Hz
Nameplate Output	.75
Number of Poles	2
Phase	1
Product Style	BUFFER
Speed	3600 rpm
Voltage	115 V 230 V

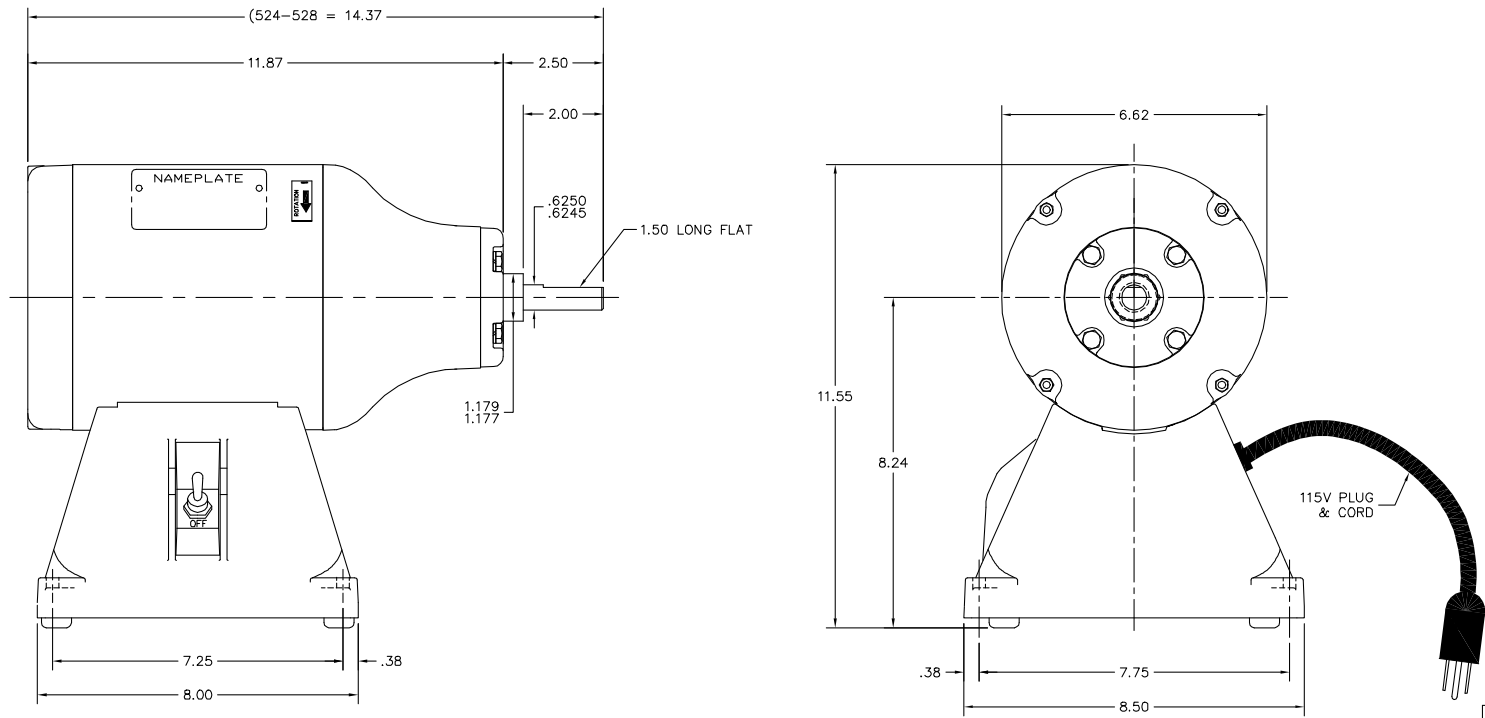
Part detail

Revision	BE
Type	AC
Mech. spec.	G8-327
Base	
Status	PRD/A
Elec. spec.	G8WG0011
Layout	G8LY0327
Eff. date	06-06-2023
CD Diagram	CD0121
Poles	02
Leads	4#18
Proprietary	False
Created date	08-08-2007

Nameplate

NP3352L			
CAT.NO.	LPL75		
HP	.75	VOLTS	115/230
PHASE	1	AMPS	4.8/2.4
HZ	60	RPM	3600
SER.NO			
SPEC.	G8-327-11		
BLANK			

G8LY0327



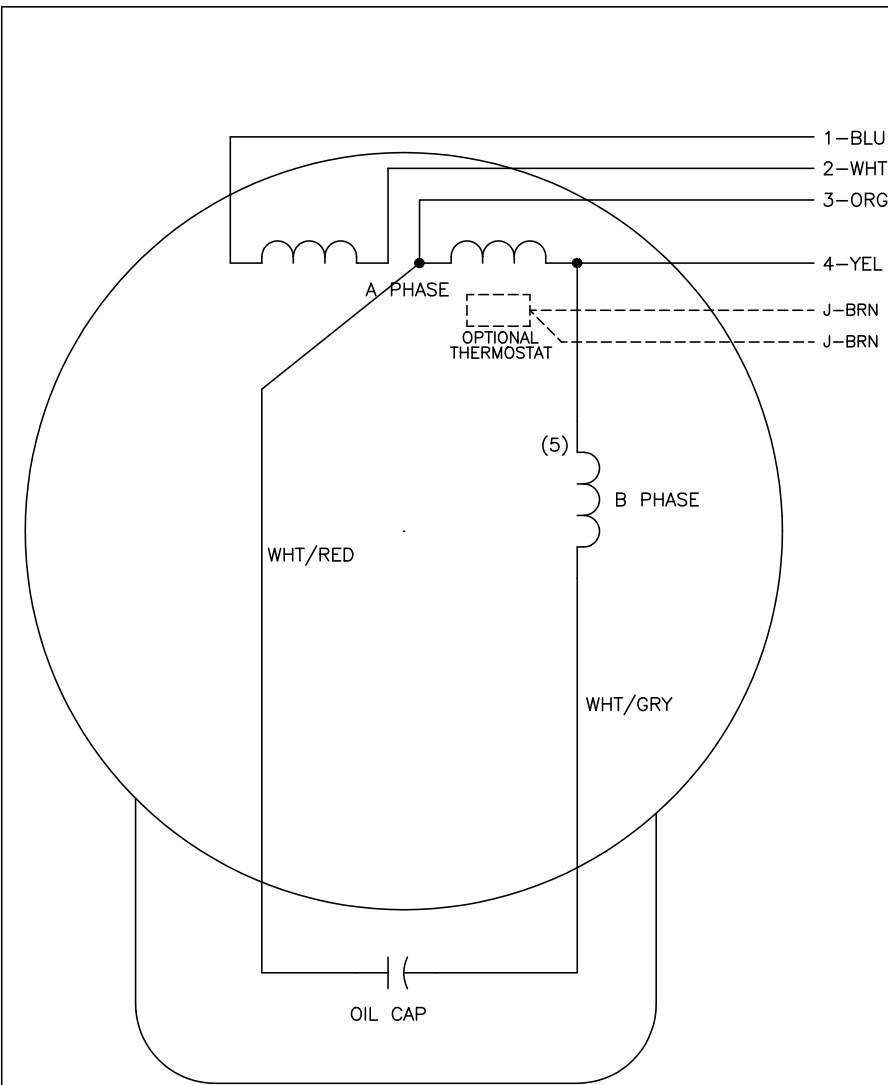
G8LY0327

CUSTOMER IS RESPONSIBLE FOR DETERMINING THAT BALDOR'S PRODUCT WILL PERFORM SUITABLY IN THE INTENDED APPLICATION.

REV. DESC: REPLACE ENDPLATES	VERSION: 02	TDR: 000001064040
REV. LTR: E	REVISED: 11:19:21 03/22/2018	BY: USJOBUR22
FILE: \AAA\00060\697		
MTL: -		

BALDOR - RELIANCE[®]
 B/SPL LAYOUT, (524C) 8" DENTAL LATHE
 SH 1 of 1

CD0121



	LINE A	LINE B	JOIN
HIGH	1	4	2,3
LOW	1,3	2,4	-

NOTES:

1. CONNECTIONS ARE SHOWN FOR CCW ROTATION FACING END OPPOSITE SHAFT EXTENSION (STD). FOR CW ROTATION, INTERCHANGE 5 AND 8 INTERNALLY.
2. OPTIONAL THERMOSTAT IS PROVIDED WHEN SPECIFIED.
3. MULTIPLE CAPACITORS ARE CONNECTED IN PARALLEL UNLESS OTHERWISE SPECIFIED.
4. LEAD COLORS ARE OPTIONAL. LEADS MUST ALWAYS BE NUMBERED AS SHOWN.

CD0121

REV. DESC: REVISE TO SHOW OPTIONAL COLORS			
REV. LTR: C	BY: JLP	REVISED: 04/08/99 4:14	TDR: 0178636
CD0121		FILE: AAA00007480	MDL: -
		MTL: -	

BALDOR ELECTRIC Co.

TYPE C, DV, FIX, 4 LEADS